

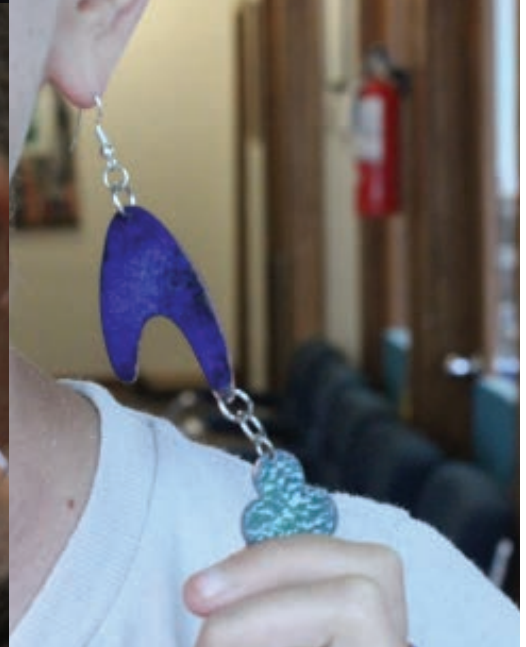
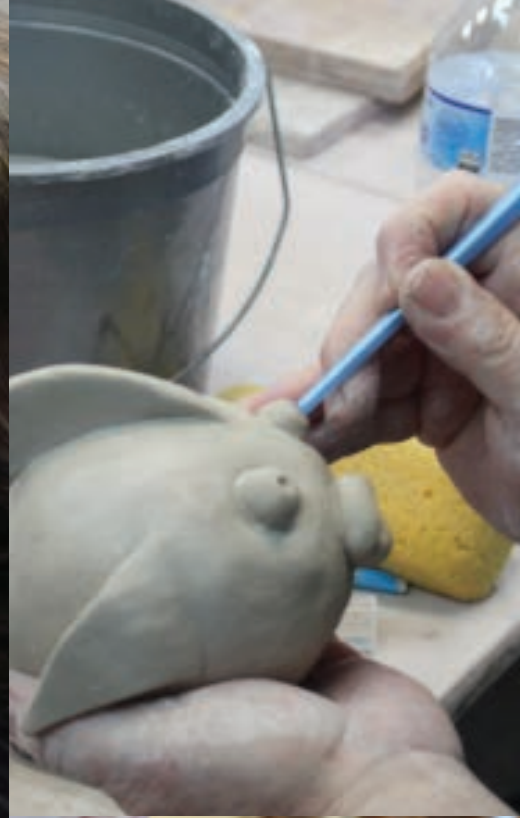
Classes and Workshops



emerge

GALLERY &
ART CENTER

Home of the Pitt County Arts Council



Adult and Youth Schedule: January - May

404 Evans Street | Greenville, NC 27858 | (252) 551-6947
info@emergegallery.com | www.emergegallery.com

Mission Statement:

Emerge Gallery & Art Center is a non-profit organization dedicated to enhancing the quality of life in Pitt County by promoting artists and arts organizations, educating through the arts, and making the arts accessible to the entire community.

Contact Us:

404 Evans Street | Greenville, NC 27858
(252) 551-6947
info@emergegallery.com | www.emergegallery.com



Community Outreach

Part of the Emerge Gallery & Art Center’s mission is to make the arts accessible to the entire community. For every five paid programs, one is completely free. We do this through art programs geared towards those affected by cancer in the hospital, artist in residency programs, and our Youth Arts Initiative program, which includes scholarships and our Youth Public Arts Project.

Youth Public Arts Project is our longest running outreach program. Started in 2005, this is a bi-monthly program, where youth come to Emerge Gallery & Art Center to work with professional artists and musicians to create various public art projects and learn about the rich heritage of African American music. The public art is then displayed throughout the community.

Art is Good Medicine is an Arts in Healthcare program in partnership with ECU Health and the McConnell-Raab Hope Lodge. Professional visual artists work with adults in the ECU Health Cancer Center, along with the McConnell-Raab Hope Lodge, and pediatric patients in the Maynard Children’s Hospital. In addition, we facilitate free adult workshops at the ECU Health Cancer Center.

Scholarships are available to our community in need to attend classes free of charge.

Please contact Paula Rountree, Programs Director at paula@emergegallery.com for more information.

General Information

| | |
|-------------------------|--------|
| Community Outreach | page 2 |
| Policies and Procedures | page 3 |

Classes and More

| | | | |
|----------------------------------|----------|-------------------------------|------------|
| Youth Classes | page 4 | Pop In Pop Art | page 11 |
| Drawing and Painting Classes | page 5 | Family Workshops | page 12-13 |
| Printmaking Classes | page 6 | Sip, Savor & Create Workshops | page 14-15 |
| Bookmaking Classes | page 6 | Stained Glass Workshop | page 16 |
| Private Lessons | page 6 | Group Activities | page 17 |
| Metal Design and Jewelry Classes | page 7 | Early Release Day Art Camps | page 18 |
| Pottery Classes | page 8-9 | Spring Break Art Camp | page 19 |
| Pottery Clubs | page 10 | Summer Art Camps | page 19 |
| Technique Workshops | page 10 | Registration Form | page 20 |



Registration Procedures

- You must fill out the registration form completely. Register early as space is limited!
- We do not take phone registrations.
- Registration is available via web, mail, or in person at our facility.
- We offer online registration. Please visit www.emergegallery.com for more information.
- Registrations may be mailed or delivered in person to: Emerge Gallery & Art Center, 404 Evans St., Greenville, NC 27858
- Mailed registrations will be recorded by date of receipt.
- Payment may be made by check, cash, or credit card.

Payment and Refund Policies

- Payments must be made in full. Deposits are not accepted!
- There will be NO refunds (full or partial) after 5 days prior to a class.
- Full refunds are available up to 2 weeks in advance, minus the processing fee of \$20.
- Full refunds must be requested in writing via mail, in person, or via email to paula@emergegallery.com.
- Partial refunds are available after 2 weeks on a sliding scale up to 5 days prior to class and include the deduction of the processing fee of \$20.
- The scale of what Emerge Gallery & Art Center will retain if a cancellation occurs:
 - 12 - 13 days prior - 10% of enrollment plus the \$20 processing fee
 - 10 - 11 days prior - 20% of enrollment plus the \$20 processing fee
 - 8 - 9 days prior - 30% of enrollment plus the \$20 processing fee
 - 7 days prior - 40% of enrollment plus the \$20 processing fee
 - 6 days prior - 50% of enrollment plus the \$20 processing fee
 - 5 days prior - 60% of enrollment plus the \$20 processing fee
 - After 5 days prior – no refund is given
- In the case of emergency, sickness, or similar events, please contact Paula Rountree at Emerge Gallery & Art Center concerning your situation and request of a refund in writing. Each situation is examined on an individual basis. Decisions are made by the Education Committee.
- In the event of any refund, the Emerge Gallery & Art Center will retain a \$20 processing fee.
- Emerge Gallery & Art Center does not offer makeup classes in any form for classes missed due to no fault of our organization. This includes switching classes or sessions.
- Prior to a session beginning, a request to switch a registration from one session to another will incur a \$10-\$20 processing fee.

Class Guidelines and Accessibility

- We encourage you to dress for mess.
- Emerge Gallery & Art Center asks that if the student is sick or showing signs of becoming sick, that you do not attend class.
- Individuals requesting accommodation under the Americans with Disabilities Act (ADA) should contact the Programs Director at paula@emergegallery.com at least two weeks prior to the start of class.
- Most of our studio classrooms are located on our second floor, however we are able to make all of our art opportunities available on the first floor if you are unable to walk upstairs. We ask that a request is made at least two weeks prior to the start of class.

Youth Classes

Handmade and Wheelturned

Grades 1st - 5th (Children taught at a skill and pace level sufficient for their needs.)

This clay classes will cover a variety of handbuilding techniques as well the potter's wheel. Students will get to make functional and nonfunctional pieces, while playing in the mud. [Min. 4, Max. 10]

All materials included.

Tuesdays, 4:15pm - 5:45pm

Instructor: TBA

Session 1: January 16 – February 20 (6 classes)

Reg. Code: HW-05

Session 2: March 5 – April 9 (5 classes)

Reg. Code: HW-06

***Skipping the week of March 26**

Session 3: April 23 – May 28 (6 classes)

Reg. Code: HW-07

Cost: Session 1 and 3: \$90 for Emerge members, \$130 for non-members

Session 2: \$75 for Emerge members, \$115 for non-members



Art FUNdamentals

Grades 1st - 5th (Children taught at a skill and pace level sufficient for their needs.)

Immerse your young artists in the world of abstraction, using lots of shapes, forms, colors, and lines! Students will be introduced to well known artists, in different abstract mediums, to inspire their own works of art. These mediums will cater towards painting, drawing, sketching, mixed media, but possibly more! [Min. 4, Max. 12]

All materials included.

Wednesdays, 4:15pm - 5:45pm

Instructor: Alex Chisler

Session 1: January 17 – February 21 (6 classes)

Reg. Code: AF-05

Session 2: March 6 – April 10 (5 classes)

Reg. Code: AF-06

***Skipping the week of March 26**

Session 3: April 24 – May 29 (6 classes)

Reg. Code: AF-07

Cost: Session 1 and 3: \$90 for Emerge members, \$130 for non-members

Session 2: \$75 for Emerge members, \$115 for non-members



Exploring the Arts

Grades 6th and up (Children taught at a skill and pace level sufficient for their needs.)

Can't decided which medium your child would enjoy the most? Then this Saturday class is for them! Students will explore a wide variety of mediums, including drawing, painting, printmaking, and handbuilding with clay. [Min. 4, Max. 12]

All materials included.

Saturdays, 1:15pm - 2:45pm

Instructor: Kayleigh Redmond

Session 1: January 20 – February 24 (6 classes)

Reg. Code: SAY-05

Session 2: March 9 – April 13 (6 classes)

Reg. Code: SAY-06

Session 3: April 27 – June 1 (6 classes)

Reg. Code: SAY-07

Cost: \$90 for Emerge members, \$130 for non-members



Drawing and Painting

Intro to Painting, Drawing and Mixed Media

Do you want to learn to paint or draw? Are you interested in working with mixed media? Would you like to perfect your skills? If so, sign up for this fun class! This open studio style class offers fellowship with other artists interested in painting, drawing, and mixed media while collaborating together on great new project ideas. [Min. 4, Max. 12]

Ages 16 and up with special permission.

First day supplies are included. The instructor will provide a supply list at the first class.

Tuesdays, 1:00pm - 3:00pm

Instructor: Gail Ritzer

Session 1: January 16 – February 20 (6 classes)

Reg. Code: PDM-05

Session 2: March 5 – April 9 (5 classes)

Reg. Code: PDM-06

***Skipping the week of March 26**

Session 3: April 23 – May 28 (6 classes)

Reg. Code: PDM-07

Cost: Session 1 and 3: \$90 for EmERGE members, \$130 for non-members

Session 2: \$75 for EmERGE members, \$115 for non-members



Drawing and Painting

Whether it is watercolor, acrylic, oils, charcoal, or graphite that strikes your fancy, we have the class for you! Our classes are small and taught like several private lessons at once, geared towards your specific interests and subject matter choices. You will learn just as much from your classmates as you will from your instructor with an open studio feel. Our class structure is great for beginners or experienced painters and drawers to further their skills! [Min. 4, Max. 12]

Ages 16 and up with special permission.

First day supplies are included. The instructor will provide a supply list at the first class.

Tuesdays, 6:00pm - 8:30pm

Instructor: Kimberly Cusack

Session 1: January 16 – February 20 (6 classes)

Reg. Code: PAD-05

Session 2: March 5 – April 9 (6 classes)

Reg. Code: PAD-06

Session 3: April 23 – May 28 (6 classes)

Reg. Code: PAD-07

Thursdays, 6:00pm - 8:30pm

Instructor: TBA

Session 1: January 18 – February 22 (6 classes)

Reg. Code: PAO-05

Session 2: March 7 – April 11 (6 classes)

Reg. Code: PAO-06

Session 3: April 25 – May 30 (6 classes)

Reg. Code: PAO-07

Cost: \$100 for EmERGE members, \$140 for non-members



Are you an EmERGE Student?

Become a Member of EmERGE!

Benefits include discounts on classes and workshops.

Student/Senior • Individual • Family • Donor • Sponsor • Patron • Benefactor



Printmaking

Printmaking

Learn how to make colorful art while having fun with this fast and easy hand printing method. All materials are provided. This class is for beginners and for those with more art experience. You will create with printing leaves and other botanical materials, stencils, and with common household objects. Your final creations will make great original hand printed cards and art prints you can frame. No experience needed. [Min. 4, Max. 12]

Ages 16 and up with special permission.

General supplies are included, however students are welcome to bring additional supplies.

Wednesdays, 1:00pm - 3:00pm

Instructor: Alex Chisler

Session 1: January 17 – February 21 (6 classes)

Reg. Code: GPM-05

Session 2: March 6 – April 10 (5 classes)

Reg. Code: GPM-06

***Skipping the week of March 26**

Session 3: April 24 – May 29 (6 classes)

Reg. Code: GPM-07

Cost: Session 1 and 3: \$90 for Emerge members, \$130 for non-members
Session 2: \$75 for Emerge members, \$115 for non-members



Bookmaking

Intro to Bookmaking

Learn the basics of book making! This course will cover a variety of techniques including sewn bindings, folded structures, and using adhesives. Participants will construct both hard cover and soft cover books, books for journaling and sketching, as well as artist books. Tools and some materials provided. No experience needed. [Min. 4, Max. 12]

Ages 16 and up with special permission.

General supplies are included, however students are welcome to bring additional supplies.

Wednesdays, 6:00pm - 8:30pm

Instructor: Liz Steiner (Session 1 and 2), TBA (Session 3)

Session 1: January 17 – February 21 (6 classes)

Reg. Code: ITB-05

Session 2: March 6 – April 10 (6 classes)

Reg. Code: ITB-06

Session 3: April 24 – May 29 (6 classes)

Reg. Code: ITB-07

Cost: \$100 for Emerge members, \$140 for non-members

Private Lessons

Private lessons are available in all areas. These hands-on lessons are taught in the one-on-one format with the instructor demonstrating, then letting the student "try it". Class dates and times are scheduled by the student and instructor's mutual agreement. Call Paula Rountree at Emerge (252) 551-6947 or e-mail at paula@emergegallery.com for more information and to schedule.

Cost: \$150 for Emerge members, \$190 for non-members (4 one hour lessons)

Bring a friend: two people \$100 each, three or more \$75 each (Emerge members only).

Need only one lesson?

Schedule by the hour - one person for \$40 an hour, two or more people \$35 an hour per person (Emerge members only).

Depending on the type of lesson, some materials or a material fee may be required. Ask for more information.

Metal Design and Jewelry

Metalsmithing Basics

Create your own unique jewelry with a found object from home or our studio! In this class we will use beginner level stone setting and hand fabrication to create your own jewelry piece. Students are introduced to essential bench tools, workspace, and techniques of a metalsmith or bench jeweler such as sawing, piercing, riveting, texture, and patina. You will learn how to combine several techniques and create a work of art that has meaning to you. No experience needed.

[Min. 4, Max. 7]

Ages 16 and up with special permission.

Supplies are included with the exception of fine metals, such as silver, that students may wish to use in class.

Tuesdays, 10:00am - 12:00pm

Instructor: Lisette Fee

Session 1: January 16 – February 20 (6 classes)

Reg. Code: TMD-05

Session 2: March 5 – April 9 (5 classes)

Reg. Code: TMD-06

***Skipping the week of March 26**

Session 3: April 23 – May 28 (6 classes)

Reg. Code: TMD-07

Cost: Session 1 and 3: \$110 for Emerge members, \$150 for non-members

Session 2: \$95 for Emerge members, \$135 for non-members

Tuesdays, 6:00pm - 8:30pm

Instructor: Sonya Coulson Rook

Session 1: January 16 – February 20 (6 classes)

Reg. Code: AMD-05

Session 2: March 5 – April 9 (6 classes)

Reg. Code: AMD-06

Session 3: April 23 – May 28 (6 classes)

Reg. Code: AMD-07

Cost: \$130 for Emerge members, \$170 for non-members

Thursdays, 6:00pm - 8:30pm

Instructor: Lisette Fee

Session 1: January 18 – February 22 (6 classes)

Reg. Code: IMD-05

Session 2: March 7 – April 11 (6 classes)

Reg. Code: IMD-06

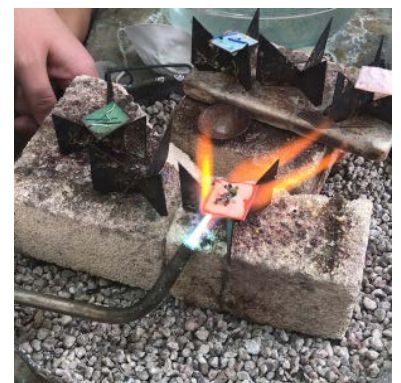
Session 3: April 25 – May 30 (6 classes)

Reg. Code: IMD-07

Cost: \$130 for Emerge members, \$170 for non-members



As a benefit of enrollment in our metals program, current students are able to come in and work during our open studio hours currently scheduled for Wednesday evenings from 6:30pm until 8:30pm. Additional details will be discussed on the first night of class.



Daytime Pottery Classes

Supply Fees: \$25 per bag of clay (covers glazes and firing) and \$20 Pottery Tool Kit (includes bucket, large sponge for cleaning, wooden and metal rib, wire tool, needle tool, double end loop and large loop trimming tool, modeling tool, and sponge)

Potter's Wheel

This is the perfect class for those interested in learning and perfecting throwing on the potter's wheel. Intermediate and advanced students will work with the instructor on problem solving and refining their skills. This is the perfect class for those interested in learning and perfecting throwing on the potter's wheel. Intermediate and advanced students will work with the instructor on problem solving and refining their skills. Advanced skills such as increasing scale, pulling spouts, and attaching handles will be addressed to challenge potters who have more wheel experience. Intro to Wheel Throwing is a prerequisite to this class. [Min. 4, Max. 8]
Ages 16 and up with special permission.

Tuesdays, 1:00pm - 3:00pm

Instructor: Erika Gibson

Session 1: January 16 – February 20 (6 classes)

Reg. Code: DPW-05

Session 2: March 5 – April 9 (5 classes)

Reg. Code: DPW-06

***Skipping the week of March 26**

Session 3: April 23 – May 28 (6 classes)

Reg. Code: DPW-07

Cost: Session 1 and 3: \$90 for Emerge members, \$130 for non-members
Session 2: \$75 for Emerge members, \$115 for non-members



Intro to Wheel Throwing

If you've never tried the potter's wheel but have always wanted to, then this class is for you. If you've thrown on the wheel before but need a refresher or are new to Emerge, then this class is for you too! During this introductory class, you will learn the fundamentals necessary for throwing cylinders and bowls. The session will focus on techniques for centering, opening, pulling, trimming, and glazing. Class size is restricted so students can get the technical instruction required to establish a good foundation for continued learning. This class is a prerequisite for continuing pottery classes. [Min. 4, Max. 6]
Ages 16 and up with special permission.

Thursdays, 10:00am - 12:00pm

Instructor: Stacey Swinson

Session 1: January 18 – February 22 (6 classes)

Reg. Code: DWT-05

Session 2: March 7 – April 11 (5 classes)

Reg. Code: DWT-06

***Skipping the week of March 26**

Session 3: April 25 – May 30 (6 classes)

Reg. Code: DWT-07

Cost: Session 1 and 3: \$100 for Emerge members, \$140 for non-members
Session 2: \$85 for Emerge members, \$125 for non-members



Handbuilding

In this class you will cover the fundamentals necessary for handbuilding such as rolling slabs and coils, using an extruder, and learn how your hands make great tools. In addition, glazing techniques and surface decoration will be covered. Students will learn how to make various seasonal projects, all of which make great handmade gifts for friends and family. [Min. 4, Max. 8]
Ages 16 and up with special permission.

Thursdays, 1:00pm - 3:00pm

Instructor: Gail Ritzer

Session 1: January 18 – February 22 (6 classes)

Reg. Code: THB-05

Session 2: March 7 – April 11 (5 classes)

Reg. Code: THB-06

***Skipping the week of March 26**

Session 3: April 25 – May 30 (6 classes)

Reg. Code: THB-07

Cost: Session 1 and 3: \$90 for Emerge members, \$130 for non-members
Session 2: \$75 for Emerge members, \$115 for non-members



Evening Pottery Classes

Supply Fees: \$25 per bag of clay (covers glazes and firing) and \$20 Pottery Tool Kit (includes bucket, large sponge for cleaning, wooden and metal rib, wire tool, needle tool, double end loop and large loop trimming tool, modeling tool, and sponge)

Handbuilding: To Function, or Not to Function?

This class will focus on introducing handbuilding techniques including slab building, coiling, and pinch pots. You can use these techniques to make something sculptural or something functional to take home. Some previous experience with clay is preferred but not necessary. If you have already taken the Intro to Pottery class and wish to learn about combining your wheel thrown items with some handbuilding techniques, then this class is also for you, however you should be skilled enough to throw on your own. [Min. 4, Max. 8]

Ages 16 and up with special permission.

Tuesdays, 6:00pm - 8:30pm

Instructor: TBA

Session 1: January 16 – February 20 (6 classes)

Reg. Code: ACT-05

Session 2: March 5 – April 9 (6 classes)

Reg. Code: ACT-06

Session 3: April 23 – May 28 (6 classes)

Reg. Code: ACT-07

Cost: \$100 for Emerge members, \$140 for non-members



Intro to Wheel Throwing: Mindful Making

This introductory class will be a little different. You will learn the fundamentals necessary for throwing including the techniques for centering, opening, pulling, trimming, and glazing, however you will do so while turning your attention to what is happening in your nervous system and intentionally using skills that can bring relief from stress. If you've never tried the potter's wheel but have always wanted to, then this class is for you. If you've thrown on the wheel before but need a refresher or are new to Emerge, then this class is for you too! Class size is restricted so students can get the technical instruction required to establish a good foundation for continued learning. A lesson and demonstration will be given at the beginning of each class. This class is a prerequisite for continuing pottery classes. [Min. 4, Max. 7]

Ages 16 and up with special permission.

Wednesdays, 6:00pm - 8:30pm

Instructor: Kia Glosson

Session 1: January 17 – February 21 (6 classes)

Reg. Code: IWT-05

Session 2: March 6 – April 10 (6 classes)

Reg. Code: IWT-06

Session 3: April 24 – May 29 (6 classes)

Reg. Code: IWT-07

Cost: \$110 for Emerge members, \$150 for non-members



Continuing Potter: Beyond the Basics

Continuing students will hone their skills at centering, opening, and pulling during this class. Projects are designed to help improve the fundamentals necessary for crafting advanced cylinders and bowls. Advanced skills such as increasing scale, pulling spouts, and attaching handles will be addressed to challenge potters who have more wheel experience. Each project will include glazing and surface decoration discussions. This class is project driven and will allow students to take home several functional pieces! Intro to Wheel Throwing is a prerequisite to this class. [Min. 4, Max. 8]

Ages 16 and up with special permission.

Thursdays, 6:00pm - 8:30pm

Instructor: Erika Gibson

Session 1: January 18 – February 22 (6 classes)

Reg. Code: CPW-05

Session 2: March 7 – April 11 (6 classes)

Reg. Code: CPW-06

Session 3: April 25 – May 30 (6 classes)

Reg. Code: CPW-07

Cost: \$100 for Emerge members, \$140 for non-members



Pottery Clubs

Membership to **The Firing Circle** and **Mudhole** is open to all current and previously enrolled students taking classes through our pottery program. You also have to be approved by the current Pottery Coordinator for admission. If you have not taken a pottery class through Emerge, you must first enroll in the Clay Studio Orientation Class prior to joining a Pottery Club. Those who have not previously taken a class with Emerge will be able to request a Clay Studio Orientation Class depending on availability and space for the program.

Email Heather Suter at education@emergegallery.com for approval.

Mudhole

Mudhole membership entitles you to use our facilities any time during our open hours, whether you are currently enrolled in a class or not, the ability to purchase clay at class rates, use of glazes, and your work will be fired through our facility.

1 month Membership Rates: \$50 for members of Emerge (members only)

3 Month Membership Rates: \$120 for members of Emerge, \$160 for non-members

The Firing Circle

Members of the Firing Circle are paying only for the use of the kiln facilities. They are not eligible for use of the pottery facility including wheels, tables, equipment, etc. This is simply a club for those individuals who wish to create and work on their artwork off site, but need kiln usage. Clay and glazes are not included. Clay may be purchased at class rates. Clay not purchased at Emerge is not permitted. Dues run on a 6 month basis. Members pay for firing by drying room shelf load (shelves are approximately 12" x 36").

6 Month Membership Rates: \$25 for Emerge members, \$65 for non-members

Firing Rates: \$15 per drying room shelf

Technique Workshops

Technique Workshops will be offered during both our spring and fall semesters. These workshops are available to those who are interested in learning a specific technique in their artform and are looking for assistance in getting there. We hope to offer these workshops in a variety of mediums and would love to hear what you would like to see. Please email education@emergegallery.com with any suggestions for future workshops.

Cost: \$40 for Emerge members, \$60 for non-members

Trimming and Carving in Pottery

(Current students, Firing Circle, and Mudhole members only)

During this two-hour workshop students will learn to refine their trimming skills, as well as explore the wonderful world of carving into your pot to create beautiful textures and decoration. Students are encouraged to attend this workshop with a minimum of 5 leather hard pieces that are a variety of shapes, forms, and sizes. [Min. 4, Max. 10]

Date: Saturday, February 24

Time: 1:30pm - 3:30pm

Reg Code: TECH-01

Instructor: Stacey Swinson

Painting the Mud in Pottery

(Current students, Firing Circle, and Mudhole members only)

Are you struggling with glazing and interested in exploring the option of painting on glazes? Then this is the workshop for you! Students will learn about the ins and outs of the glaze application process. Students are encouraged to attend this workshop with a minimum of 5 bisque pieces. We will have glazes available to you to paint with, however you may also bring in your own glazes, if they have been approved for firing here at Emerge. [Min. 4, Max. 10]

Date: Saturday, May 18

Time: 1:30pm - 3:30pm

Reg Code: TECH-02

Instructor: Stacey Swinson

Pop In Pop Art



Pop In Pop Art workshops are back! We will be offering our Pop In Pop Art workshops one Saturday a month starting at 1:00pm. Workshops are available for children as young as age three and adults of all ages.

Walk-ins are welcome and encouraged. Commit now and sign up online!

Cost: \$15 for 20-25 minute lesson, per person

Workshop Times:

1:00pm - 1:25pm, 1:45pm - 2:10pm, and 2:30pm - 2:55pm

Origami Animal

Come to this workshop to learn how to make a small origami animal! You will pick your color paper and learn the folding process to make the animal. The goal is to transform a flat square sheet of paper into a finished sculpture through folding and sculpting techniques.

Date: Saturday, January 6

Potter's Wheel

Come in to learn how to make a small bowl on the potter's wheel! You will learn to center and pull the clay to make a simple form. Participants will return at a later date to pick up their pots after they have been glazed.

Date: Saturday, February 3

Watercolor Card

Participants will be painting a watercolor card with botanical or organic subject matter in mind. Inside the card you can hand write a message for any occasion!

Date: Saturday, March 2

Wine Charm

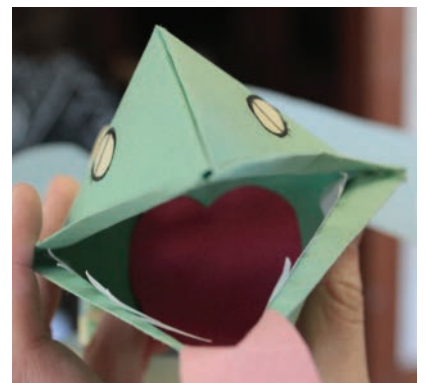
In this workshop you will get to create a wine charm (mug charm) for yourself or to give as a gift. You can personalize your charm by adding texture or stamping words into copper shapes.

Date: Saturday, April 6

Ceramic Mushroom

Decorate your garden by learning how to hand build a mushroom made from clay. They will learn to mold the form and then paint the tops of their mushrooms with underglaze to make them colorful. Participants will return at a later date to pick up their pots after they have been glazed.

Date: Saturday, May 4



Family Workshop



Spend a little quality time with the ones you love by creating something together! We invite families to create art side by side. These two hour workshops provide a fun and rewarding time for parents, grandparents, big brothers and big sisters to work with a young person while exploring new materials and creating projects as a team.

Cost: \$40 for Emerge members, \$60 for non-members
(1 adult, 1 child)
\$10 each for additional person



Musical Chairs Painting

(Children Ages 3+ and an Adult)

Join us to make two paintings while collaborating with a loved one. Each participant will get their own canvas to start a background and then rotate with their partner to continue painting. This back-and-forth swap will happen a few times throughout the workshop, creating unique collaborations. [Min. 4, Max. 12]

Date: Sunday, January 28

Time: 1:30pm – 3:30pm

Reg. Code: FWS-04

Instructor: TBA

Pocket Stuffed Animal

(Children Ages 6+ and an Adult)

Come in to learn how to make a miniature stuffed animal. You will layer different colored felts to create a small animal, learn to hand stitch it closed, and stuff it with a small amount of poly fill to make it three dimensional. These tiny friends can go with you anywhere in your pocket or bag! [Min. 4, Max. 12]

Date: Sunday, February 25

Time: 1:30pm – 3:30pm

Reg. Code: FWS-05

Instructor: Kelly Rye

Family Workshop

Potter's Wheel

(Children Ages 3+ and an Adult)

Participants will learn the basics of working on the potter's wheel. They will learn to center and pull the clay to make a simple form. Participants will choose one or two of their best attempts to keep, and return to pick up their pots after they have been glaze fired by our staff. [Min. 4, Max. 10]

Date: Sunday, March 10

Time: 1:30pm – 3:30pm

Reg. Code: FWS-06

Instructor: Jacque Schacht

Family Photo Collage

(Children Ages 3+ and an Adult)

In this workshop, you will have the opportunity to turn a fun family photo into a mixed media collage. The participants will have a photo taken at the beginning of the workshop, and then learn multiple techniques to embellish a project with your family photo on it. [Min. 4, Max. 12]

Date: Sunday, April 28

Time: 1:30pm – 3:30pm

Reg. Code: FWS-07

Instructor: Kelly Rye

Fairy House

(Children Ages 3+ and an Adult)

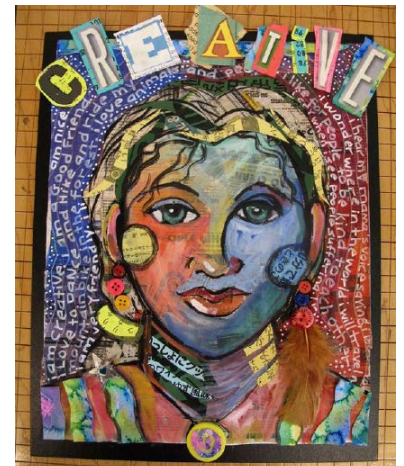
Family members will be making whimsical fairy houses out of clay using several handbuilding techniques. Please bring your imagination full of things that a fairy would have in their home or in their yard! After construction, projects will be painted with underglaze during the workshop, fired by our staff, and returned to you a few weeks later. [Min. 4, Max. 12]

Date: Sunday, May 19

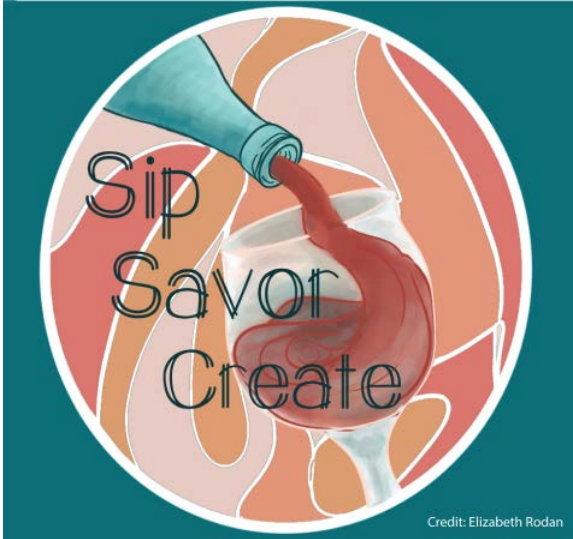
Time: 1:30pm – 3:30pm

Reg. Code: FWS-08

Instructor: Jacque Schacht



Sip, Savor & Create



Make plans to join us for Emerge's Adult Workshop Series that uses artistic fun as a great excuse to have a night out! Grab your friends and join us for a wonderful art project while enjoying a glass of wine! No experience is necessary, but a willingness to have fun is! All supplies are included. Please feel free to bring a beverage of your choice.

*Must be 21 or over to register.
(Beer and white wine are welcome. No liquor please.)

We provide:
All the art supplies
A great art instructor

You need to bring:
You!
Friends!
Beer or white wine if you wish.

Cost: \$40 for Emerge members, \$60 for non-members
*Discount of \$10 for second enrollment for members in the same household.



Lensless Photography

In this workshop, participants will learn how to expand their creative skillset with black and white silver gelatin paper. Techniques covered include lumens and their family of variants like the kitchen chemigram. Lumen printing refers to exposures and impressions made without developing photographic paper, creating lovely pastels, earth tones, and sometimes more vibrant creations. "Kitchen" Chemigrams will find participants repurposing household materials, including kitchen waste and materials to make wild and colorful creations allowing photography to crossover into other realms of art such as resist, monoprint, and painting. Participants will leave with at least three final prints of their own photographic creation. [Min. 4, Max. 12]

Date: Friday, January 19
Time: 6:30pm - 8:30pm
Reg. Code: WND-04
Instructor: TBA

Potter's Wheel

Come visit our studio to center clay and help center yourself! It's been a tough week, so sign up to have a creative release while enjoying friends and glass of wine at Emerge. This is a great opportunity to try out the potter's wheel and maybe find a new hobby you will enjoy. [Min. 4, Max. 10]

Date: Friday, February 16
Time: 6:30pm - 8:30pm
Reg. Code: WND-05
Instructor: Erika Gibson

Sip, Savor & Create

Making that Paper!

In this workshop you will be learning the process of making paper. We will make paper pulp from recycled materials and experiment with adding inclusions, such as flowers, plants, threads, personal effects (old letters or fabrics, torn memorabilia) and other eye-catching items, into our paper. Participants wanting further exploration will learn how to wet emboss their handmade paper using textured materials as well as how to create 3-Dimensional paper objects using common household or personal objects as molds. All experience levels are welcome. [Min. 4, Max. 12]

Although materials will be provided, you can personalize the experience and bring the following:

- For making paper pulp: old jeans, colored/raw cotton fabrics, colored or scrap paper
- For inclusions: any material you find interesting and would like to see in your handmade paper, such as colored materials and textures you find visually engaging, flower petals, plants, leaves, string, memorabilia you don't mind getting wet (old letters, torn book pages, poems, handwritten things...flower petals, fabric scraps, leaves, string, bits of thread). Noelle play will old handwritten letters, torn pages from books, vintage fibers, wool, plant debris and trash she finds visually engaging.
- For embossing: textures (plastics, metals and glass work best)
- For molds: personal and household objects (plastics, metals, and glass work best)

Date: Saturday, March 16

Time: 1:30pm - 3:30pm

Reg. Code: WND-06

Instructor: Noelle Gunn

Bento Box

In just two hours, you will learn how to work with clay and experience personal creativity as never before! Participants in this workshop will build a ceramic bento box. These projects will be food and dishwasher safe, making it perfect to enjoy any meal in! [Min. 4, Max. 12]

Date: Friday, April 19

Time: 6:30pm - 8:30pm

Reg. Code: WND-07

Instructor: Jacque Schacht

Gel Plate Printing and Painting

Learn how to make colorful art while having fun with this fast and easy hand printing method. All materials are provided. This class is for beginners and for those with more art experience. You will create with printing leaves and other botanical materials, stencils, and with common household objects. Your final creations will make great original hand printed cards and art prints you can frame. [Min. 4, Max. 12]

Date: Friday, May 17

Time: 6:30pm - 8:30pm

Reg. Code: WND-08

Instructor: Alex Chisler



Make - N - Take

Stained Glass Workshop with Wild Rose Glass

Saturday, May 18, 2024

\$125 per project, up to 2 per group
10:00am – 1:00pm or 2:00pm – 5:00pm



You will learn safety, technique, and go home with a piece you made the very same day! There will be a variety of designs to choose. All supplies are included. Pre-registration is encouraged. Seats are limited.



404 Evans Street
Greenville, NC 27858
(252) 551-6947
info@emergegallery.com
www.emergegallery.com



Group Activities



Emerge Gallery & Art Center schedules activities and special events for groups. We can cater our lessons to your needs. Just ask! This format is great for the fun night out among friends, work parties, scout badges, and traveling art camps.

We Offer:

- Painting - Acrylics, Watercolor, or Mixed Media
- Ceramics - Potter's Wheel or Handbuilding
- Metal Design - Jewelry or Metal Design
- Textiles - Silk Painting, Fabric Collage, Fabric Dying or Screen Printing

Group Activity Package Rates

Package One: 1.5 hour activity
Starting at \$120.

Package Two: Half Day: 2 hour art activity, 1 hour room rental for your group. (3 hours)
Starting at \$180

Package Three: Full Day: Two 3 hour activity with 1 hour lunch. (7 hours)
Starting at \$360

ART BASED TEAMBUILDING TO FUEL CREATIVITY!

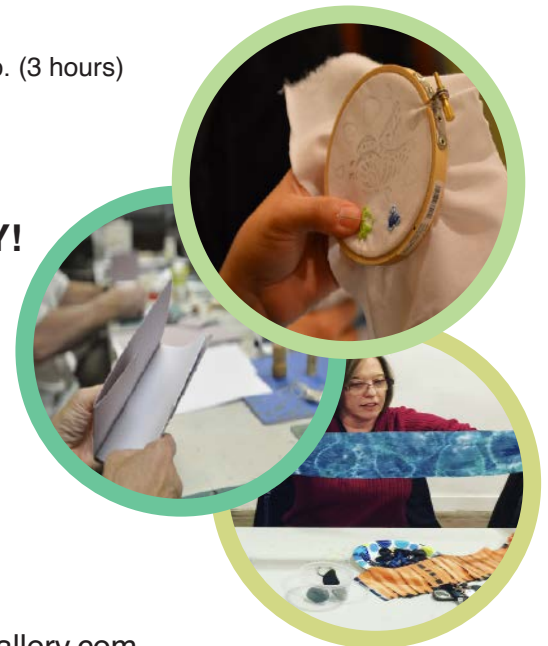
BENEFITS OF TEAM BUILDING:

Empower your workforce through hands-on, creative teambuilding!

Energize Your Team - Develop Their Skills

Rely on our Expertise - Inspiring Creative Space

Let's Get Started!



Emerge Gallery & Art Center

404 Evans Street, Greenville, NC 27858

(252) 551-6947

Paula Rountree, Programs Director

paula@emergegallery.com | www.emergegallery.com

Parties must be booked two weeks in advance.

Please contact Paula Rountree to book your group activity!

Early Release Day Art Camps

Trying to figure out what to do with your child(ren) on an early release day from school? Check out our Early Release Art Camps on Pitt County Schools' early release days. No two days of our camps will be alike, as we explore a wide variety of fun art mediums and activities. Each Early Release Art Camp day will have its own theme! Sign up for one, or sign up for all three. Open to ages 3 and up.

Things to know!

1. Dress for mess.
2. If you are here for lunch hour, please pack a lunch.
3. Please pack an afternoon snack.

Cost: \$30 for Emerge members, \$45 for non-members

Sibling discount: \$5 off after the first child

Extend Pick Up to 5:00pm: \$5 per child

Schedule

12:00pm - 1:00pm: Study Time/Drop Off Window (homework, reading, or coloring)

1:00pm - 4:00pm: Art Camp, divided into age appropriate groups

4:00pm - 4:15pm: Pick Up

Spring into the Summer

Date: Thursday, March 14

Reg. Code: ERAC-01

Prehistoric

Date: Thursday, April 11

Reg. Code: ERAC-02

Food for Thought

Date: Thursday, May 2

Reg. Code: ERAC-03





Save the Date!
March 25 – 29, 2024



Save the Date!
June 3 – August 12, 2024

Registration Form

Student's First Name: _____ Student's Last Name: _____

Address: _____ City: _____ State: _____ Zip: _____

Phone (home): _____ Phone (cell): _____

E-Mail: _____

Emergency Contact Information: _____

Relationship: _____ Phone: _____

If you have a disability and may require accommodations in order to fully participate, please indicate here:

How would you like to be contacted to discuss your needs: _____

Below must be completed if student is under 18 years of age:

Child's Age: _____ Birthday: _____ Grade: _____ School: _____

1st Parent/Guardian's Name: _____

2nd Parent/Guardian's Name: _____

Does your child have any allergies or medical conditions we should be aware of? (Please list below.)

Are you (or your child) a member of the Emerge Gallery & Art Center?: Yes _____ No _____

Do you agree to Emerge Gallery & Art Center photographing you or your child and using it in promotional materials (web, print, etc) and social media (facebook, twitter, instagram, etc)? Yes _____ No _____

| Class Name: | Registration Code: | Amount: |
|-------------|--------------------|---------|
| 1. | | |
| 2. | | |

Waiver of Liability: In consideration for Emerge Gallery & Art Center making programs available to myself or my child, I here-by release Emerge Gallery & Art Center, its employees, volunteers, instructors, and agents from any and all liability, cost/expense associated with any injury or illness that I or my child may sustain while participating in any of the programs and activities. I voluntarily agree to assume all of the foregoing risks and accept sole responsibility for any injury to myself (including, but not limited to, personal injury, disability, and death), illness, damage, loss, claim, liability, or expense, of any kind, that I may experience or incur in connection with me or my child's attendance at Emerge Gallery & Art Center or participation in Emerge Gallery & Art Center programming. In case I cannot be reached in an Emergency, I give my permission to the Emerge Gallery & Art Center to select proper Emergency care and treatment for my child or myself. Furthermore, I hereby hold Emerge Gallery & Art Center, its employees, volunteers, instructors, and agents harmless for any damage, loss, or claims to my person, child, or property. I understand that payment must be made in full. I agree to the refund policy stated in the class booklet in the event of a refund request. Refunds are possible up to one week prior to class. No refunds 5 days prior.

Signature: _____ **Date:** _____

If under 18 years of age must be signature of Parent or Legal Guardian.

Please remember to mark your calendar!

With questions and/or for enrollment information, please contact Heather Suter, Education Coordinator, at education@emergegallery.com.