



**emerge**  
GALLERY &  
ART CENTER

# SUMMER CAMPS

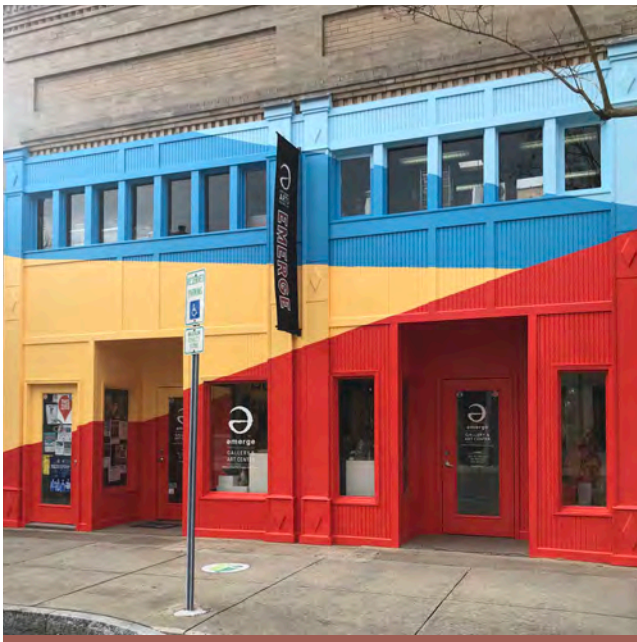
**CAMPS FOR  
Ages 5 & UP**

*10 weeks to choose from!*





# TABLE OF CONTENTS



## MISSION STATEMENT:

Emerge Gallery & Art Center is a non-profit organization dedicated to enhancing the quality of life in Pitt County by promoting artists and arts organizations, educating through the arts, and making the arts accessible to the entire community.

## CONTACT US:

404 S. Evans Street, Greenville, NC 27858  
(252) 551-6947  
info@emergegallery.com | www.emergegallery.com

## QUESTIONS ABOUT SUMMER CAMP:

If you have questions or need assistance please contact Paula Rountree by phone or email paula@emergegallery.com.

<b>Programs, Pricing, &amp; Info</b>	<b>Pages 3-5</b>
<b>Emerging Artists Camps: Grades K-5</b>	<b>Pages 6-13</b>
<b>Advanced Youth Camps: Grades 6 &amp; up</b>	<b>Pages 14-21</b>
<b>Membership Form</b>	<b>Page 22</b>
<b>Registration Form</b>	<b>Pages 23-24</b>

## ABOUT EMERGE

The Pitt County Arts Council at Emerge is the local arts council for Pitt County. The PCAC at Emerge is located in a facility with over 8000 square feet, at 404 S. Evans Street in Uptown Greenville. There are three main gallery spaces, including two that rotate monthly with new exhibitions. There are also three smaller gallery spaces around the art center for community and student exhibitions to be shown.

Emerge has a full art center including a pottery facility with 13 potter's wheels, a metalsmithing studio, photography classroom, and two general classrooms. Emerge offers weekly adult and youth classes, workshops, and special events, as well as a full youth summer program.

Part of the PCAC at Emerge's mission is to make the arts accessible to the entire community. For every five paid programs, one is completely free and targeted towards at-risk or underprivileged youth. We do this through after school music and art programs in the Pitt County Public Schools, artist in residency programs, and our Youth Arts Initiative program that includes scholarships and our Youth Public Arts Project.

## KEEP UP WITH OUR SUMMER FUN!



PittCountyArts



PittCountyArtsCouncil



PittCountyArts



PittCountyArts



emergegallery.com



PittCountyArts



## PROGRAMS

### EMERGING ARTISTS (GRADE K-5)

The Emerging Artists' Program at Emerge Gallery & Art Center offers youth the opportunity to experience the world of art through fun, interactive programs including activities such as movie making, claymation, music videos, painting, potter's wheel, printmaking, photography, and much more! Please note: Campers will be separated into appropriate age groups depending on the number of attendees.

### ADVANCED YOUTH (GRADE 6 & UP)

The Advanced Youth Program at Emerge is a great opportunity for "tweens" and teenagers to expand their knowledge and expertise in various areas of fine art. We pride ourselves on high-quality, hands-on activities not capable in most schools such as metal design, potter's wheel techniques, alternative photography, painting with advanced methods and materials, film editing, and more. Youth Camps are opportunities for youth to immerse themselves in the art area of their choice. Campers will work on in-depth art projects in the set area. Please note: Campers will be separated into appropriate age groups depending on the number of attendees.

## SAFETY GUIDELINES & REFUND POLICY

- There will be temperature checks at the beginning of each day of camp.
- All students, instructors, and staff are required to wear a face mask.  
We will have some available for purchase or you may pack your own.
- During camp we will have a scheduled snack time. Emerge will not provide snack. Parents/guardians are responsible for packing snack and water for their camper. Campers staying for half-day will have one snack time. Full day campers will have two snack times and a lunch time. Campers are required to bring their own lunch.
- We encourage you to dress for mess. To reduce sharing items, Emerge will not be able to provide aprons.  
We encourage you to pack your own apron or wear clothes you are ok with getting art on.
- The class size has been reduced to 4-5 depending on classroom size. Pre-registration is highly encouraged.
- If your camper, or anyone your camper has been exposed to, is showing symptoms of COVID or becoming sick, please let us know, and Emerge will issue a refund for any unused camp time.

## PRICING

### FULL DAY CAMP

Take both Morning & Afternoon Camps to equal a full day camp! (9am until 4pm). Members of Emerge: \$195, Non-members: \$235

### HALF DAY CAMP

Morning (9am until 12pm) or Afternoon (1pm until 4pm). Members of Emerge: \$85, Non-members: \$125

### LUNCH BUNCH OPTION

If you are doing a half day of camp, but need an extra hour, you may add on our lunch bunch option, for **\$5 per day**.

This does not include lunch, so please bring a bagged lunch. \* Please note: the lunch bunch option has already been added to all full day camp options.

## PROGRAMS INFO

### MEMBERSHIP PRICING

- If you are not a member of Emerge join today and enjoy the benefits of membership. Tax-deductible memberships begin at \$40.
- Membership Discount: Please note that non-member pricing is the equivalent to member pricing with the addition of purchasing an individual membership. Membership is tax deductible and runs on a yearly basis, PLUS you will receive discounts on classes for an entire year! What a value!

Find more information about memberships on page 22.

### ACTIVITIES

Please note that we never repeat any project within our summer camp season. While mediums such as pottery, painting, drawing, and mixed media may be listed under several camps as a focus, it is important to understand that we will always be doing different projects with those mediums. Therefore, parents are completely able and encouraged to sign up their children for multiple camps even if similar activities are listed.



## SIBLING PROMOTION COUPON

- Half Day Promotion: For every half day program in which you enroll two or more siblings, you will receive a \$5 off each registration after the first child. This coupon only applies to each sibling enrolled after the first enrollment during the same week and time of camp.
- Full Day Promotion: For every full day program in which you enroll two or more siblings, you will receive a \$10 off each child's registration after the first child. The coupon only applies to each sibling enrolled after the first enrollment during the same week and time of camp.
- Promotion Coupons are available for siblings residing in the same household enrolling in the same summer camp.
- Note: Children must be enrolling together during the same camp or a camp at the same time to receive the promotion.
- Promotions **CANNOT** be transferred to different camps or weeks. Promotions can be used for as many weeks as enrollees wish to sign up for as long as these requirements are met.

## ALLERGIES, MEDICATIONS, & SPECIAL NEEDS

- If participating children have food allergies, parents are required to check the appropriate box on the registration form, denoting the allergy.
- We ask that you please notify the Emerge Gallery & Art Center of any medical conditions or special needs that your child may require. You may include this information on the denoted area on the registration form. We **DO NOT** allow children to administer medicine to themselves.
- Emerge staff is not responsible or allowed to administer medication to camp participants. In the event that a child requires medication, a parent or guardian must come to administer medications. No exceptions!
- Please, list any medications, including behavioral modification, medications on the denoted area on the registration form.

## CLASS SIZE

- One of our promises is to offer high quality art education with small class sizes and a lot of instructor/student one-on-one interaction.
- Due to COVID, we will be capping classes with 4-5 children per each instructor.

## SCHOLARSHIPS

A limited number of full and partial scholarships will be available. Scholarships are based on financial need. For more information, to receive a scholarship application, or to donate to our scholarship fund please contact Paula Rountree, Programs Director at Emerge Gallery & Art Center via phone (252) 551-6947 or email [paula@emergegallery.com](mailto:paula@emergegallery.com).



## PAYMENT & REFUNDS

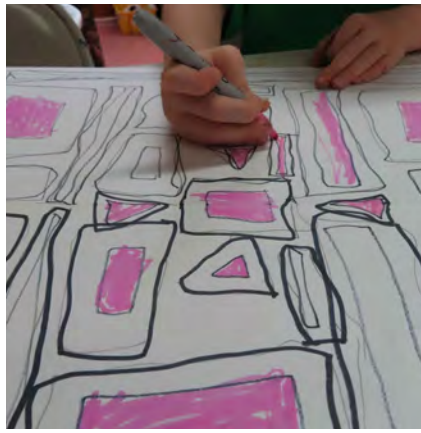
- Payments must be made in full – deposits are not accepted.
- There will be **NO** refunds either full or partial after five days prior to a summer art camp.
- Full refunds are available up to two weeks advanced, minus the processing fee of \$20. Full refunds must be requested in writing either via mail, in person, or email to [paula@emergegallery.com](mailto:paula@emergegallery.com).
- Partial refunds are available after two weeks on a sliding scale up to five days prior to camp and include the deduction of the processing fee of \$20. The scale of what Emerge will retain if a cancellation occurs:
  - 13 & 12 days prior - 10% of enrollment plus the \$20 processing fee
  - 11 & 10 days prior - 20% of enrollment plus the \$20 processing fee
  - 9 & 8 days prior - 30% of enrollment plus the \$20 processing fee
  - 7 days prior - 40% of enrollment plus the \$20 processing fee
  - 6 days prior - 50% of enrollment plus the \$20 processing fee
  - 5 days prior - 60% of enrollment plus the \$20 processing fee
  - After 5 days prior – **no refund is given**
- In the case of emergency, sickness, and similar events, please contact the Emerge Gallery & Art Center via Paula Rountree concerning your situation and need of refund. Each situation is examined on a case by case basis and decisions are made by the education committee.
- In the event of any refund, Emerge Gallery & Art Center will retain a \$20 processing fee.
- Emerge does not offer makeup classes of any type for summer art camps missed due to no fault of our organization. This includes switching camps, classes or sessions.
- See page 3 for information about our COVID/Safety Guidelines.

## REGISTRATION POLICIES

- You must fill out the registration form completely.
- We do not take phone registrations. Space is very limited. Register early!
- Registration is available online, via mail, or in person at our facility.
- We offer online registration. Please, visit [www.emergegallery.com](http://www.emergegallery.com) for more information.
- Registrations may be mailed in or delivered in person to: Emerge Gallery & Art Center, 404 S. Evans Street, Greenville, NC 27858
- Mailed registrations will be recorded by date of receipt.
- Payment may be made by check, cash, or credit card (**Visa or Mastercard only**). If paying by credit card on a mailed registration, please fill in the address portion with your billing address as noted on your credit card statement.
- Please, note that the multiple children sibling discount applies **AFTER** your first registration. (i.e., on second, third, etc., registrations from the same household on the same camp.)

## PICK UP

- Every person who is allowed to pick up your child, must be listed on the registration form.
- Photo ID may be required to pick up a child.
- There will be a \$5 charge if a child is not picked up within 15 minutes of the conclusion of camp.



## May 31 - June 4

## GRADE K-5

### All Fired Up!

Time: 9am until 12pm

During this camp, your child will start their wheels and there begins an instant passion for pottery. They will explore wheel work and handbuilding as they concentrate on the basic skills and fundamentals of clay. When they come home each day they will be fired up with stories of class.

Grade K-5 (Campers will be divided into age appropriate classes.)

Cost: \$85 for members of Emerge, \$125 for non-members

Registration Code: EA-01

### Contemporary Masterpieces

Time: 1pm until 4pm

Contemporary art is a dynamic combo of materials, method, and concepts. Campers will use mediums such as clay, painting, photography, and sculpture to study fascinating techniques used by famous modern artists to create their own modern masterpieces. They will be looking at artworks by Yayoi Kusama, Chuck Close, Andy Warhol, and others.

Grade K-5 (Campers will be divided into age appropriate classes.)

Cost: \$85 for members of Emerge, \$125 for non-members

Registration Code: EA-02

### Emerging Artist's Camp – All Day Option – May 31 - June 4

Time: 9am until 4pm

Sign up your child for both the morning camp, "All Fired Up!" and the afternoon camp, "Contemporary Masterpieces" with this all day option. Lunch bunch is included in all day camp packages. Please be sure to pack a bagged lunch for your child.

Grade K-5 (Campers will be divided into age appropriate classes.)

Cost: \$195 for members of Emerge, \$235 for non-members

(Number accepted depends upon morning and afternoon enrollment. Register early to ensure your spot.)

Registration Code: EA-03



## Did your artist enjoy creating?

We offer weekly youth classes in the Fall and Spring. Check out our full schedule and private lesson options at [www.emergegallery.com](http://www.emergegallery.com).



## June 7 - 11

## GRADES K-5

### Art Studio Explorers

Time: 9am until 12pm

Explore the world of art through various mediums and activities. Art is about exploring your thoughts and ideas through the use of many artistic mediums. Find out what suits your campers best as they explore multiple mediums like the pottery wheel, painting, photography, printmaking, sculpture, and drawing.

Grade K-5 (Campers will be divided into age appropriate classes.)

Cost: \$85 for members of Emerge, \$125 for non-members

Registration Code: EA-04



### Eco Art

Time: 1pm until 4pm

Sometimes you don't have to look far to find inspiration! Learn about artists like Robert Rauschenberg, Marcel Duchamp and Julian Schnabel who became famous for using broken, found, and everyday objects in their artwork. In this camp, participants will up-cycle common items into spectacular art of your own through assembly, painting, and sculpture.

Grade K-5 (Campers will be divided into age appropriate classes.)

Cost: \$85 for members of Emerge, \$125 for non-members

Registration Code: EA-05

### Emerging Artist's Camp – All Day Option – June 7 – 11

Time: 9am until 4pm

Sign up your child for both the morning camp, "Art Studio Explorers" and the afternoon camp, "Eco Art" with this all day option. Lunch bunch is included in all day camp packages. Please be sure to pack a bagged lunch for your child.

Grade K-5 (Campers will be divided into age appropriate classes.)

Cost: \$195 for members of Emerge, \$235 for non-members

(Number accepted depends upon morning and afternoon enrollment. Register early to ensure your spot.)

Registration Code: EA-06



## June 14 - 18

## GRADES K-5

### Abstract ThINkING

Time: 9am until 12pm

Immerse your young artists in the world of abstraction, using lots of shapes, forms, colors, and lines! Campers will be introduced to well known artists such as Jackson Pollock, Wassily Kandisky, and others to create projects inspired by their works. Activities will include painting, drawing, sketching, mixed media, and more!

Grade K-5 (Campers will be divided into age appropriate classes.)

Cost: \$85 for members of Emerge, \$125 for non-members

Registration Code: EA-07



**June 14 - 18 continues on page 8**



## June 14 - 18 continued

## GRADE K-5

### **Imagination Engineers**

Time: 1pm until 4pm

We raided the art supply cabinet and are ready to make art out of practically everything! Campers will use a variety of techniques and media to create fun and unique works of art inspired by daily gallery visits. Paint, print, collage, weave, and build 3-D sculptures. Enjoy creating with textures, patterns, and layers of design. The possibilities are endless!

Grade K-5 (Campers will be divided into age appropriate classes.)

Cost: \$85 for members of Emerge, \$125 for non-members

Registration Code: EA-08

### **Emerging Artist's Camp – All Day Option – June 14 – 18**

Time: 9am until 4pm

Sign up your child for both the morning camp, “Abstract THiNKing” and the afternoon camp “Imagination Engineers” with this all day option. Lunch bunch is included in all day camp packages. Please be sure to pack a bagged lunch for your child.

Grade K-5 (Campers will be divided into age appropriate classes.)

Cost: \$195 for members of Emerge, \$235 for non-members

(Number accepted depends upon morning and afternoon enrollment. Register early to ensure your spot.)

Registration Code: EA-09

## June 21 - 25

## GRADE K-5

### **Stroke of Genius**

Time: 9am until 12pm

Immerse your young artists in the world of the masters! Campers will be introduced to well known artists and create projects inspired by their works. Activities will include painting, drawing, sketching, and mixed media! They will also learn the implements of S.T.E.A.M. and how art can relate to other school subjects.

Grade K-5 (Campers will be divided into age appropriate classes.)

Cost: \$85 for members of Emerge, \$125 for non-members

Registration Code: EA-10

### **Budding Artist**

Time: 1pm until 4pm

This camp is great for children expressing interests in learning more about fine art and art techniques. Participants will receive in-depth instruction on the basics of fine art and the 7 design elements. Then they will learn to apply these elements across several different mediums.

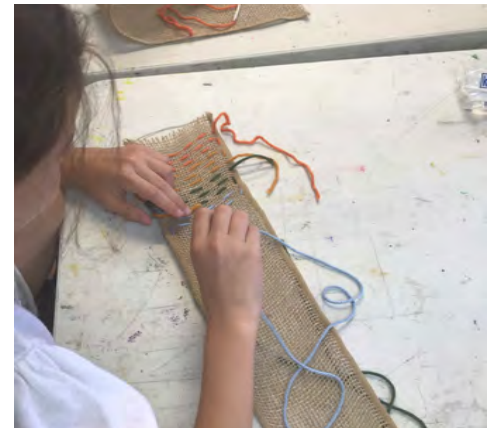
Grade K-5 (Campers will be divided into age appropriate classes.)

Cost: \$85 for members of Emerge, \$125 for non-members

Registration Code: EA-11

**June 21 - 25 continues on next page**





## **Emerging Artist's Camp – All Day Option – June 21 – 25**

Time: 9am until 4pm

Sign up your child for both the morning camp, “Stroke of Genius” and the afternoon camp “Budding Artist” with this all day option. Lunch bunch is included in all day camp packages. Please be sure to pack a bagged lunch for your child.

Grade K-5 (Campers will be divided into age appropriate classes.)

Cost: \$195 for members of Emerge, \$235 for non-members

(Number accepted depends upon morning and afternoon enrollment. Register early to ensure your spot.)

*Registration Code: EA-12*

# June 28 - July 2

# GRADES K-5

## **Caked with Mud**

Time: 9am until 12pm

Does your child love pottery? Let your camper get their hands dirty this week as we dive into the clay studio! They will learn how to throw on the potter's wheel and construct clay sculptures while learning techniques such as coiling, slabs, glazing, and molding. We will no doubt have a messy good time, but don't worry, it washes out!

Grade K-5 (Campers will be divided into age appropriate classes.)

Cost: \$85 for members of Emerge, \$125 for non-members

*Registration Code: EA-13*

## **Versatile Textiles**

Time: 1pm until 4pm

Let your children make their own impression in this world! Silk painting is a very unique craft. The ink used soaks into the silk, providing ample opportunities to try different techniques and patterns. Students will also explore various fabric activities including sewing, fabric collages, and more. Campers walk away having learned something valuable, and have a beautiful piece of art to show for it.

Grade K-5 (Campers will be divided into age appropriate classes.)

Cost: \$85 for members of Emerge, \$125 for non-members

*Registration Code: EA-14*

## **Emerging Artist's Camp – All Day Option – June 28 – July 2**

Time: 9am until 4pm

Sign up your child for both the morning camp, “Caked with Mud” and the afternoon camp, “Versatile Textiles” with this all day option. Lunch bunch is included in all day camp packages. Please be sure to pack a bagged lunch for your child.

Grade K-5 (Campers will be divided into age appropriate classes.)

Cost: \$195 for members of Emerge, \$235 for non-members

(Number accepted depends upon morning and afternoon enrollment. Register early to ensure your spot.)

*Registration Code: EA-15*



## Skipping the week of July 5 - 9

**July 12 - 16**

**GRADE K-5**

### **Photo-tastic**

Time: 9am until 12pm

Campers will learn the basics of photography in this fast paced fun camp. Campers will experience photography in multiple ways through alternative photography including cyanotype t-shirts and mixed media utilizing photography by assembling multiple images and materials. Campers will learn photography processes, some with, and some without cameras. No special equipment is needed for this camp. Emerge will supply point and shoot cameras for projects that require them.

Grade K-5 (Campers will be divided into age appropriate classes.)

Cost: \$85 for members of Emerge, \$125 for non-members

Registration Code: EA-16

### **Pop, Paper, Scissors!**

Time: 1pm until 4pm

Sculpture, metal design, printmaking, and more! POP IT GOES! This camp is all about making it POP! Pop-up books, awesome art and science experiments, the creation of one-of-a-kind toys and working erupting volcano or creature. They will also learn the implements of S.T.E.A.M. and how art can relate to other school subjects.

Grade K-5 (Campers will be divided into age appropriate classes.)

Cost: \$85 for members of Emerge, \$125 for non-members

Registration Code: EA-17

### **Emerging Artist's Camp – All Day Option – July 12 – 16**

Time: 9am until 4pm

Sign up your child for both the morning camp, "Photo-tastic" and the afternoon camp, "Pop, Paper, Scissors!" with this all day option. Lunch bunch is included in all day camp packages. Please be sure to pack a bagged lunch for your child.

Grade K-5 (Campers will be divided into age appropriate classes.)

Cost: \$195 for members of Emerge, \$235 for non-members

(Number accepted depends upon morning and afternoon enrollment. Register early to ensure your spot.)

Registration Code: EA-18



**July 19 - 23**

**GRADES K-5**

**Metallic Madness**

Time: 9am until 12pm

Metallic Madness is perfect for any child that loves the shiny world of art! Campers will work on a variety of projects including wearables, key chains, and small sculptures. Older participants will get to experience the metal design studio as they learn how real metalsmiths work, while trying it for themselves.

Grade K-5 (Campers will be divided into age appropriate classes.)

Cost: \$85 for members of Emerge, \$125 for non-members

Registration Code: EA-19

**Summer Sculptor**

Time: 1pm until 4pm

Let your camper get their hands dirty this summer and have a great time doing it! Participants in this sculpting camp will work on coil, slab, and molding ceramic techniques, as well as spend time working on the wheel. They will learn surface decoration processes and spend more time handbuilding.

Grade K-5 (Campers will be divided into age appropriate classes.)

Cost: \$85 for members of Emerge, \$125 for non-members

Registration Code: EA-20

**Emerging Artist's Camp – All Day Option – July 19 – 23**

Time: 9am until 4pm

Sign up your child for both the morning camp, “Metallic Madness” and the afternoon camp, “Summer Sculptor” with this all day option. Lunch bunch is included in all day camp packages. Please be sure to pack a bagged lunch for your child.

Grade K-5 (Campers will be divided into age appropriate classes.)

Cost: \$195 for members of Emerge, \$235 for non-members

(Number accepted depends upon morning and afternoon enrollment. Register early to ensure your spot.)

Registration Code: EA-21



**July 26-30**

**GRADE K-5**

**Grease the Wheels**

Time: 9am until 12pm

It's time to rev those engines and grease the wheels with loads of clay! Campers will spend most of their time on the wheel throwing pots. They will also learn some coil, molding techniques, and use underglaze to enhance their artwork.

Grade K-5 (Campers will be divided into age appropriate classes.)

Cost: \$85 for members of Emerge, \$125 for non-members

Registration Code: EA-22



**July 26-30 continues on page 12**



**July 26 - 30 continued** **GRADE K-5**

**Crazy cARToons**

Time: 1pm until 4pm

We want to encourage campers to go crazy creating their very own fictional characters. Students will work independently designing their own cartoons, comic strips, and flip art books. We can't wait to see what kookie creations the students come up with!

Grade K-5 (Campers will be divided into age appropriate classes.)

Cost: \$85 for members of Emerge, \$125 for non-members

Registration Code: EA-23

**Emerging Artist's Camp – All Day Option – July 26 – 30**

Time: 9am until 4pm

Sign up your child for both the morning camp, "Grease the Wheel" and the afternoon camp, "Crazy cARToons" with this all day option. Lunch bunch is included in all day camp packages. Please be sure to pack a bagged lunch for your child.

Grade K-5 (Campers will be divided into age appropriate classes.)

Cost: \$195 for members of Emerge, \$235 for non-members

(Number accepted depends upon morning and afternoon enrollment. Register early to ensure your spot.)

Registration Code: EA-24

**AUGUST 2 - 6** **GRADE K-5**

**Clay the Day Away**

Time: 9am until 12pm

In this pottery themed camp students will be creating a whole dining set for themselves, including one plate, one bowl, and one cup! Some of the artwork will be wheel thrown and some will be hand built. All of pieces will have some surface decoration and underglaze to make them slightly match so they appear as a set.

Grade K-5 (Campers will be divided into age appropriate classes.)

Cost: \$85 for members of Emerge, \$125 for non-members

Registration Code: EA-25

**August 2 - 6 continues on next page**



### Four P's in a Pod

Time: 1pm until 4pm

Immerse your young artists in the world of the masters! Participants will be introduced to well known artists like Claude Monet, Andy Warhol, and Ben Owen to create project inspired by their works. Activities will include painting, pottery, printmaking and photography.

Grade K-5 (Campers will be divided into age appropriate classes.)

Cost: \$85 for members of Emerge, \$125 for non-members

Registration Code: EA-26

### Emerging Artist's Camp – All Day Option – August 2 – 6

Time: 9am until 4pm

Sign up your child for both the morning camp, “Clay the Day Away” and the afternoon camp, “Four P's in a Pod” with this all day option. Lunch bunch is included in all day camp packages. Please be sure to pack a bagged lunch for your child.

Grade K-5 (Campers will be divided into age appropriate classes.)

Cost: \$195 for members of Emerge, \$235 for non-members

(Number accepted depends upon morning and afternoon enrollment. Register early to ensure your spot.)

Registration Code: EA-27



## August 9 - 13

## GRADE K-5

### Prehistoric ARTifacts

Time: 9am until 12pm

Clay vessels were made and used long before the invention of the wheels. This camp will explore pottery through the hand-building techniques of coiling, slab construction, and pinching. Campers will also learn about interesting patterns and surface techniques to finish their pots.

Grade K-5 (Campers will be divided into age appropriate classes.)

Cost: \$85 for members of Emerge, \$125 for non-members

Registration Code: EA-28

### Petite Picassos & Pollocks

Time: 1pm until 4pm

Campers will create original artwork based of techniques of the well-known artists Pablo Picasso and Jackson Pollock. Students will explore mediums such as clay, watercolor, paint, pastels, as well as a variety of multimedia elements.

Grade K-5 (Campers will be divided into age appropriate classes.)

Cost: \$85 for members of Emerge, \$125 for non-members

Registration Code: EA-29

### Emerging Artist's Camp – All Day Option – August 9 – 13

Time: 9am until 4pm

Sign up your child for both the morning camp, “Prehistoric ARTifacts” and the afternoon camp, “Petite Picassos & Pollocks” with this all day option. Lunch bunch is included in all day camp packages. Please be sure to pack a bagged lunch for your child.

Grade K-5 (Campers will be divided into age appropriate classes.)

Cost: \$195 for members of Emerge, \$235 for non-members

(Number accepted depends upon morning and afternoon enrollment. Register early to ensure your spot.)

Registration Code: EA-30





## May 31 - June 4

## GRADE 6 & UP

### **A Fine Line**

Time: 9am until 12pm

Drawing is a way of communicating and seeing the world that surrounds us. This class will help campers learn the principles of design, perspective, and composition. Each class will focus on a specific demonstration, strategies, and group sharing of work will be encouraged.

Grade 6 & Up (Campers will be divided into age appropriate classes.)

Cost: \$85 for members of Emerge, \$125 for non-members

Registration Code: AY-01

### **A Pot of Gold**

Time: 1pm until 4pm

Review basic wheel throwing techniques, and explore how to make shapes other than the typical round forms made on the potter's wheel. Create ovals, squares, and fun funky shapes! Experiment with stacking, stretching, and cutting wheel thrown forms to create your own pot of gold.

Grade 6 & Up (Campers will be divided into age appropriate classes.)

Cost: \$85 for members of Emerge, \$125 for non-members

Registration Code: AY-02

### **Advanced Youth Camp – All Day Option – May 31 – June 4**

Time: 9am until 4pm

Sign up your child for both the morning camp, "A Fine Line" and the afternoon camp, "A Pot of Gold" with this all day option. Lunch bunch is included in all day camp packages. Please be sure to pack a bagged lunch for your child.

Grade 6 & Up (Campers will be divided into age appropriate classes.)

Cost: \$195 for members of Emerge, \$235 for non-members

(Number accepted depends upon morning and afternoon enrollment. Register early to ensure your spot.)

Registration Code: AY-03



## Did your artist enjoy creating?

We offer weekly youth classes in the Fall and Spring. Check out our full schedule and private lesson options at [www.emergegallery.com](http://www.emergegallery.com).



## June 7 - 11

## GRADE 6 & UP

### Dali in Dough

Time: 9am until 12pm

Dali was an imaginative artist, similar to your very own camper. Your artist will tap into the world of surrealism to create dream like ceramics. They will learn several aspects and techniques for both hand building and the wheel.

Grade 6 & Up (Campers will be divided into age appropriate classes.)

Cost: \$85 for members of Emerge, \$125 for non-members

Registration Code: AY-04



### Makers Gonna Make

Time: 1pm until 4pm

Can't decided which medium is best for your child? Then this camp is for them! Students will explore a wide variety of mediums, including drawing, painting, printmaking, and handbuilding with clay.

Grade 6 & Up (Campers will be divided into age appropriate classes.)

Cost: \$85 for members of Emerge, \$125 for non-members

Registration Code: AY-05

### Advanced Youth Camp – All Day Option – June 7 – 11

Time: 9am until 4pm

Sign up your child for both the morning camp, “Dali in Dough” and the afternoon camp, “Makers Gonna Make” with this all day option. Lunch bunch is included in all day camp packages. Please be sure to pack a bagged lunch for your child.

Grade 6 & Up (Campers will be divided into age appropriate classes.)

Cost: \$195 for members of Emerge, \$235 for non-members

(Number accepted depends upon morning and afternoon enrollment. Register early to ensure your spot.)

Registration Code: AY-06



## June 14 - 18

## GRADE 6 & UP

### Cameras, and Photos, and Film...Oh My!

Time: 9am until 12pm

This camp teaches the basics of black and white photography and digital photography. Techniques including composition, exposure, film processing, darkroom techniques, and Adobe Photoshop. No special equipment is required. If students wish to bring their own camera (any point and shoot), this is fine. Emerge also has point and shoot cameras available for use.

Grade 6 & Up (Campers will be divided into age appropriate classes.)

Cost: \$85 for members of Emerge, \$125 for non-members

Registration Code: AY-07



**June 14 - 18 continues on page 16**



**June 14 - 18 continued** **GRADE 6 & UP**

**Fit for a King**

Time: 1pm until 4pm

Charming and Cinderella need a new ensemble for the ball! Let your camper make their own apparel to wear for the King and Queen. Students will explore various fabric activities including sewing, fabric collages and silk painting. Silk painting inks with wax resist boundaries provide ample opportunities to try different techniques and patterns of royalty.

Grade 6 & Up (Campers will be divided into age appropriate classes.)

Cost: \$85 for members of Emerge, \$125 for non-members

Registration Code: AY-08

**Advanced Youth Camp – All Day Option – June 14 – 18**

Time: 9am until 4pm

Sign up your child for both the morning camp, “Cameras, and Photos, and Film...Oh My!” and the afternoon camp, “Fit For a King” with this all day option. Lunch bunch is included in all day camp packages. Please be sure to pack a bagged lunch for your child.

Grade 6 & Up (Campers will be divided into age appropriate classes.)

Cost: \$195 for members of Emerge, \$235 for non-members

(Number accepted depends upon morning and afternoon enrollment. Register early to ensure your spot.)

Registration Code: AY-09

**June 21 - 25** **GRADE 6 & UP**

**À la cARTE**

Time: 9am until 12pm

It's time to create our favorite meal in mud! Campers will utilize clay as they create food sculptures utilizing a variety of handbuilding techniques and glazing applications. Students will create a meal and table setting for themselves.

Grade 6 & Up (Campers will be divided into age appropriate classes.)

Cost: \$85 for members of Emerge, \$125 for non-members

Registration Code: AY-10

**Red Hot Enameling**

Time: 1pm until 4pm

Five days of learning and creating in metal! Enameling is a centuries old technique of fusing glass to metal. Campers will also learn the basics of metal design including sawing, forming, filing, texturing, and more. The type of work that could be made include, but is not limited to, jewelry, key chains, and small sculptures.

Grade 6 & Up (Campers will be divided into age appropriate classes.)

Cost: \$85 for members of Emerge, \$125 for non-members

Registration Code: AY-11

**June 21 - 25 continues on next page**





## Advanced Youth Camp – All Day Option – June 21 – 25

Time: 9am until 4pm

Sign up your child for both the morning camp, “À la cARTE” and the afternoon camp, “Red Hot Enameling” with this all day option. Lunch bunch is included in all day camp packages. Please be sure to pack a bagged lunch for your child.

Grade 6 & Up (Campers will be divided into age appropriate classes.)

Cost: \$195 for members of Emerge, \$235 for non-members

(Number accepted depends upon morning and afternoon enrollment. Register early to ensure your spot.)

Registration Code: AY-12



## June 28 - July 2

## GRADE 6 & UP

### A Splash of Color

Time: 9am until 12pm

Acrylic and watercolor are both painting mediums, but are very different from each other! Campers will work with instructor to relay their creative ideas into works of art on canvas and watercolor paper! Students with previous experience will work with instructors to problem solve and refine their skills.

Grade 6 & Up (Campers will be divided into age appropriate classes.)

Cost: \$85 for members of Emerge, \$125 for non-members

Registration Code: AY-13

### Turn & Burn

Time: 1pm until 4pm

It is true that the potter's wheel is mesmerizing and magical. This camp is for students who want intensive time on the potter's wheel. Instruction on centering, pulling, trimming, finishing, glazing, and kiln science. Campers will also discuss the implements of S.T.E.A.M. and how art can relate to other school subjects.

Grade 6 & Up (Campers will be divided into age appropriate classes.)

Cost: \$85 for members of Emerge, \$125 for non-members

Registration Code: AY-14



## Advanced Youth Camp – All Day Option – June 28 – July 2

Time: 9am until 4pm

Sign up your child for both the morning camp, “A Splash of Color” and the afternoon camp, “Turn & Burn” with this all day option. Lunch bunch is included in all day camp packages. Please be sure to pack a bagged lunch for your child.

Grade 6 & Up (Campers will be divided into age appropriate classes.)

Cost: \$195 for members of Emerge, \$235 for non-members

(Number accepted depends upon morning and afternoon enrollment. Register early to ensure your spot.)

Registration Code: AY-15



## Skipping the week of July 5-9



**July 12 - 16**

**GRADE 6 & UP**

**thINK Tank**

Time: 9am until 12pm

Campers will learn to draw from both life and photos. Drawing is a way of communicating and seeing the world that surrounds us. This class, taught by a working artist, will help students learn the principles of design, perspective, and composition. Also, campers will learn printmaking techniques to reproduce their drawings.

Grade 6 & Up (Campers will be divided into age appropriate classes.)  
Cost: \$85 for members of Emerge, \$125 for non-members

Registration Code: AY-16

**Good Dirt for the Garden**

Time: 1pm until 4pm

This class will take clay through a full life circle from the ground, to hands, to kiln, and back into your garden. Campers will utilize clay as they create one-of-a-kind, complex sculptures with a variety of handbuilding techniques and under glaze applications. Participants will create unique birdbaths, garden ornaments, and more.

Grade 6 & Up (Campers will be divided into age appropriate classes.)  
Cost: \$85 for members of Emerge, \$125 for non-members

Registration Code: AY-17

**Advanced Youth Camp – All Day Option – July 12 – 16**

Time: 9am until 4pm

Sign up your child for both the morning camp, “thINK Tank” and the afternoon camp, “Good Dirt for the Garden” with this all day option. Lunch bunch is included in all day camp packages. Please be sure to pack a bagged lunch for your child.

Grade 6 & Up (Campers will be divided into age appropriate classes.)  
Cost: \$195 for members of Emerge, \$235 for non-members  
(Number accepted depends upon morning and afternoon enrollment. Register early to ensure your spot.)

Registration Code: AY-18

*Don't forget your membership!*

*Join for the first time, renew to keep receiving benefits,  
or increase your member level*

Visit [emergegallery.com/support/membership](http://emergegallery.com/support/membership)



## July 19 - 23

## GRADE 6 & UP

### Pixel Perfect

Time: 9am until 12pm

This intro level camp teaches the basics in graphic design and teaches students how graphic design is a form of visual communication through the use of type, image, form, and color.

Grade 6 & Up (Campers will be divided into age appropriate classes.)

Cost: \$85 for members of Emerge, \$125 for non-members

Registration Code: AY-19

### Me, Myself, and I

Time: 1pm until 4pm

Many artists, including Vincent Van Gogh and Frieda Kahlo, have famously painted self-portraits. This camp is designed for young artists who want to learn to draw and paint faces as well as learn something about themselves.

Grade 6 & Up (Campers will be divided into age appropriate classes.)

Cost: \$85 for members of Emerge, \$125 for non-members

Registration Code: AY-20



### Advanced Youth Camp – All Day Option – July 19 – 23

Time: 9am until 4pm

Sign up your child for both the morning camp, “Pixel Perfect” and the afternoon camp, “Me, Myself, and I” with this all day option. Lunch bunch is included in all day camp packages. Please be sure to pack a bagged lunch for your child.

Grade 6 & Up (Campers will be divided into age appropriate classes.)

Cost: \$195 for members of Emerge, \$235 for non-members

(Number accepted depends upon morning and afternoon enrollment. Register early to ensure your spot.)

Registration Code: AY-21



## July 26 - 30

## GRADE 6 & UP

### Paleo Pottery

Time: 9am until 12pm

Clay vessels were made and used long before the invention of the wheel. This camp will explore pottery through some of the oldest and still traditional hand-building techniques of coiling, slab construction, and pinching. Campers will also dabble in some surface decoration and paint on their pots with underglazes.

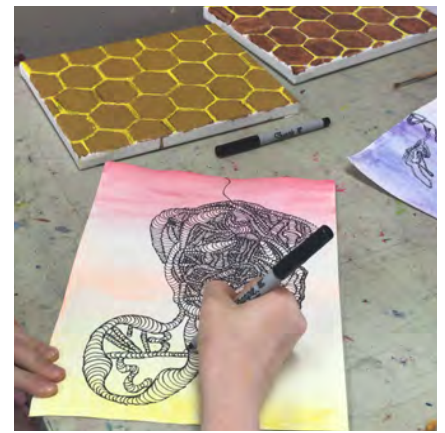
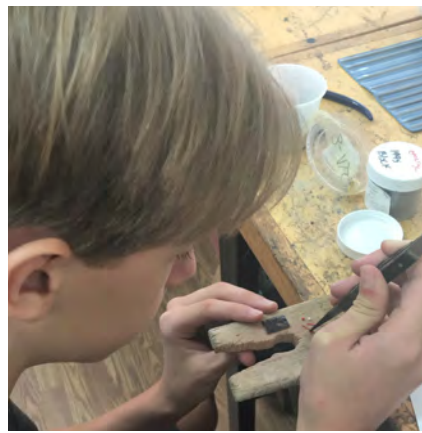
Grade 6 & Up (Campers will be divided into age appropriate classes.)

Cost: \$85 for members of Emerge, \$125 for non-members

Registration Code: AY-22



**July 26-30 continues on page 20**



## July 26 - 30 continued

## GRADE 6 & UP

### **Let There Be Light**

Time: 1pm until 4pm

This is a camp for students who love to draw and paint. We will study value and light and how to achieve three-dimensionality through their use. Value is such an important element of art to learn making images appear to jump off the canvas, really taking your child's artwork to the next level.

Grade 6 & Up (Campers will be divided into age appropriate classes.)

Cost: \$85 for members of Emerge, \$125 for non-members

Registration Code: AY-23

### **Advanced Youth Camp – All Day Option – July 26 - 30**

Time: 9am until 4pm

Sign up your child for both the morning camp, "Paleo Pottery" and the afternoon camp, "Let There Be Light" with this all day option. Lunch bunch is included in all day camp packages. Please be sure to pack a bagged lunch for your child.

Grade 6 & Up (Campers will be divided into age appropriate classes.)

Cost: \$195 for members of Emerge, \$235 for non-members

(Number accepted depends upon morning and afternoon enrollment. Register early to ensure your spot.)

Registration Code: AY-24

## August 2 - 6

## GRADE 6 & UP

### **Midas Metals**

Time: 9am until 12pm

This camp is Metal Design 101 for those wanting to turn their art skills to gold! Campers will work alongside Midas to acquire the golden touch, creating one of a kind sculptures using metal design techniques including soldering and cold connections.

Grade 6 & Up (Campers will be divided into age appropriate classes.)

Cost: \$85 for members of Emerge, \$125 for non-members

Registration Code: AY-25

### **Elements of Design**

Time: 1pm until 4pm

Campers will focus on the 7 elements of design – space, shape, form, texture, line, color, and value. They will learn how to combine the elements in a successful manner, while delving into various mediums such as pen and ink, acrylics, watercolor and drawing!

Grade 6 & Up (Campers will be divided into age appropriate classes.)

Cost: \$85 for members of Emerge, \$125 for non-members

Registration Code: AY-26



## **Advanced Youth Camp – All Day Option – August 2 – 6**

Time: 9am until 4pm

Sign up your child for both the morning camp, “Midas Metals” and the afternoon camp “Elements of Design” with this all day option. Lunch bunnch is included in all day camp packages. Please be sure to pack a bagged lunch for your child.

Grade 6 & Up (Campers will be divided into age appropriate classes.)

Cost: \$195 for members of Emerge, \$235 for non-members

(Number accepted depends upon morning and afternoon enrollment. Register early to ensure your spot.)

Registration Code: AY-27

# August 9 - 13

# GRADE 6 & UP

## **As Smooth As Silk**

Time: 9am until 12pm

Silk painting is a unique craft, and this camp will provide ample opportunities to try different techniques and patterns. Students will learn the relationship between ink and silk, and a well constructed lesson can provide the necessary guidance for nurturing their creativity. Campers walk away having learned something new, and have beautiful pieces of art to show for it.

Grade 6 & Up (Campers will be divided into age appropriate classes.)

Cost: \$85 for members of Emerge, \$125 for non-members

Registration Code: AY-28

## **ARTificial Intelligence**

Time: 1pm until 4pm

Campers will get a chance to feed their creative appetite while exploring all aspects of art and finding innovative ways to link art to science. They will also discuss the implements of S.T.E.A.M. and how art can relate to other school subjects. Each day will feature a new medium.

Grade 6 & Up (Campers will be divided into age appropriate classes.)

Cost: \$85 for members of Emerge, \$125 for non-members

Registration Code: AY-29

## **Advanced Youth Camp – All Day Option – August 9 – 13**

Time: 9am until 4pm

Sign up your child for both the morning camp, “As Smooth As Silk” and the afternoon camp, “ARTificial Intelligence” with this all day option. Lunch bunnch is included in all day camp packages. Please be sure to pack a bagged lunch for your child.

Grade 6 & Up (Campers will be divided into age appropriate classes.)

Cost: \$195 for members of Emerge, \$235 for non-members

(Number accepted depends upon morning and afternoon enrollment. Register early to ensure your spot.)

Registration Code: AY-30

# MEMBERSHIP FORM

# SUPPORT YOUR LOCAL ARTS COUNCIL & SAVE!

MEMBERSHIPS

MEMBERSHIP BENEFITS

I would like to sign up for the following:  
(Please check the membership of your choice)

<input type="checkbox"/>	<b>Student/Senior 65+</b> PCC & ECU only	(\$25)
<input type="checkbox"/>	<b>Individual</b>	(\$40)
<input type="checkbox"/>	<b>Family</b>	(\$65)
<input type="checkbox"/>	<b>Donor</b>	(\$150)
<input type="checkbox"/>	<b>Sponsor</b>	(\$250)
<input type="checkbox"/>	<b>Patron</b>	(\$500)
<input type="checkbox"/>	<b>Benefactor</b>	(\$1,000)

Thanks for your support of Emerge Gallery and Art Center, Home of the Pitt County Arts Council. Your donation is tax deductible. Emerge is a 501 (c)(3) non-profit organization.

Date \_\_\_\_\_

Name \_\_\_\_\_

Address \_\_\_\_\_

City \_\_\_\_\_ State \_\_\_\_\_ Zip \_\_\_\_\_

Phone \_\_\_\_\_

E-mail \_\_\_\_\_

If Applicable:

Spouse's Name: \_\_\_\_\_

Child(ren)'s Name(s): \_\_\_\_\_

If individual member is under 18

Parent/Guardian: \_\_\_\_\_

404 S. Evans St. Greenville, NC 27858  
252-551-6947 | info@pittcountyarts.org | www.pittcountyarts.org

Become a part of the Pitt County Arts Council at Emerge and help support this non-profit art center. Members are an active part of Emerge and benefits are growing everyday. Memberships are renewed yearly.

### Student/Senior \$25

Benefits for ECU and PCC students with valid ID and Seniors 65 years and older include monthly mailings, discounts on classes and workshops for the individual, seasonal newsletter, invitation to annual meeting, the chance to register first for Jolly Trolley Polar Express and free admission to select special events.

### Individual \$40

Benefits include monthly mailings, discounts on classes and workshops for the individual, seasonal newsletter, invitation to annual meeting, the chance to register first for Jolly Trolley Polar Express and free admission to select special events.

### Family \$65

Benefits include monthly mailings, discounts on classes and workshops for the immediate family, seasonal newsletter, invitation to annual meeting, the chance to register first for Jolly Trolley Polar Express and free admission to select special events.

### Donor \$150

Benefits include monthly mailings, discounts on classes and workshops for the immediate family, a seasonal newsletter, 5% off sales gallery, invitation to annual meeting, the chance to register first for Jolly Trolley Polar Express and free admission to select special events.

### Sponsor \$250

Benefits include monthly mailings, discounts on classes and workshops for the immediate family, a seasonal newsletter, 10% off sales gallery, invitation to annual meeting, the chance to register first for Jolly Trolley Polar Express and free admission to select special events.

### Patron \$500

Benefits include monthly mailings, seasonal newsletter, 10% off in sales gallery, class discounts, invitation to annual meeting, one free 2 hour rental of the gallery, the chance to register first for Jolly Trolley Polar Express and expanded free admission to select special events.

### Benefactor \$1,000

Benefits include monthly mailings, class discounts, seasonal newsletter, 15% off in sales gallery, invitation to annual meeting, one free 4 hour rental of the gallery, the chance to register first for Jolly Trolley Polar Express and expanded free admission to select special events.



**emerge**

GALLERY &  
ART CENTER

Home of the Pitt County Arts Council

# CHILD ONE INFORMATION

Child's Name: \_\_\_\_\_ Age: \_\_\_\_\_ Birthday: \_\_\_\_\_

Grade child will be in 21/22 school year: \_\_\_\_\_ Child's School: \_\_\_\_\_

Medical information: List any medical conditions/special needs that might limit your child's activities:  
 \_\_\_\_\_  
 \_\_\_\_\_

List any allergies that your child has:  
 \_\_\_\_\_  
 \_\_\_\_\_

List any medications, including behavioral modification that your child is taking:  
 \_\_\_\_\_  
 \_\_\_\_\_

*Please note we cannot administer medication. \*Please notify us if you have recently changed your child's behavioral medication.*

# CAMP INFORMATION

1st Camp: \_\_\_\_\_ Camp Code: \_\_\_\_\_ Price: \_\_\_\_\_

2nd Camp: \_\_\_\_\_ Camp Code: \_\_\_\_\_ Price: \_\_\_\_\_

3rd Camp: \_\_\_\_\_ Camp Code: \_\_\_\_\_ Price: \_\_\_\_\_

4th Camp: \_\_\_\_\_ Camp Code: \_\_\_\_\_ Price: \_\_\_\_\_

# CHILD TWO INFORMATION

Child's Name: \_\_\_\_\_ Age: \_\_\_\_\_ Birthday: \_\_\_\_\_

Grade child will be in 21/22 school year: \_\_\_\_\_ Child's School: \_\_\_\_\_

Medical information: List any medical conditions/special needs that might limit your child's activities:  
 \_\_\_\_\_  
 \_\_\_\_\_

List any allergies that your child has:  
 \_\_\_\_\_  
 \_\_\_\_\_

List any medications, including behavioral modification that your child is taking:  
 \_\_\_\_\_  
 \_\_\_\_\_

*Please note we cannot administer medication. \*Please notify us if you have recently changed your child's behavioral medication.*

# CAMP INFORMATION

1st Camp: \_\_\_\_\_ Camp Code: \_\_\_\_\_ Price: \_\_\_\_\_

2nd Camp: \_\_\_\_\_ Camp Code: \_\_\_\_\_ Price: \_\_\_\_\_

3rd Camp: \_\_\_\_\_ Camp Code: \_\_\_\_\_ Price: \_\_\_\_\_

4th Camp: \_\_\_\_\_ Camp Code: \_\_\_\_\_ Price: \_\_\_\_\_

# PARENT INFORMATION

Parent 1/Guardian's Name:

E-mail:

Phone (H)

(W)

(C)

Address:

City:

State:

Zip Code:

Parent 2/Guardian's Name:

E-mail:

Phone (H)

(W)

(C)

Address:

City:

State:

Zip Code:

# EMERGENCY

For immediate questions/emergencies (circle all that apply)

Parent 1/Guardian

Parent 2/Guardian

Other

If other, please provide the following:

Name:

Relationship:

Phone:

Name:

Relationship:

Phone:

Name:

Relationship:

Phone:

# PICK UP

Who will pick up your child from camp? (circle all that apply)

Parent 1/Guardian

Parent 2/Guardian

Emergency Contact

Pick up other than parents/guardians:

Name:

Phone (H)

(C)

Name:

Phone (H)

(C)

Name:

Phone (H)

(C)

# WAIVER OF LIABILITY

In consideration for the Emerge Gallery & Art Center making summer programs available to myself or my child I hereby release the Emerge Gallery & Art Center, its employees, volunteers, instructors, and agents from any and all liability, cost/expense associated with any injury I or my child may sustain while participating in any of the summer programs. Furthermore, I hereby release the Emerge Gallery & Art Center, its employees, volunteers, instructors and agents harmless for any damage, loss, or claims to my person, child, or property. I assume full and all risks and responsibilities on the premises, both known and unknown, in case I cannot be reached in an emergency, I give my permission to Emerge Gallery and Art Center to select proper emergency care and treatment for my child or myself. I understand that payment must be made in full and there will be no refunds of money, either full or partial, within five days of camp.

I agree to the Emerge Gallery & Art Center photographing my child and using it in promotional materials & posts to social media including Facebook, Instagram, Pinterest, and/or Twitter.

Yes

No

Signature of parent or legal guardian:

Date:

Please remember to mark your calendar! We send email confirmations only!  
With questions or for enrollment information,  
please contact Paula Rountree at Emerge Gallery & Art Center  
paula@emergegallery.com -- (252) 551-6947